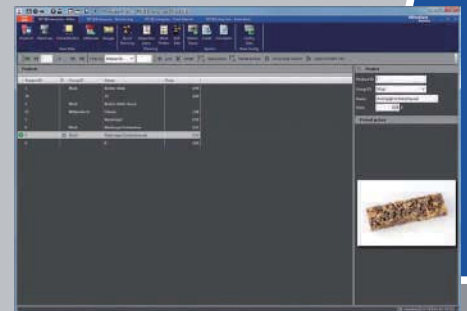


# Overview of the features of the software SPC@Enterprise

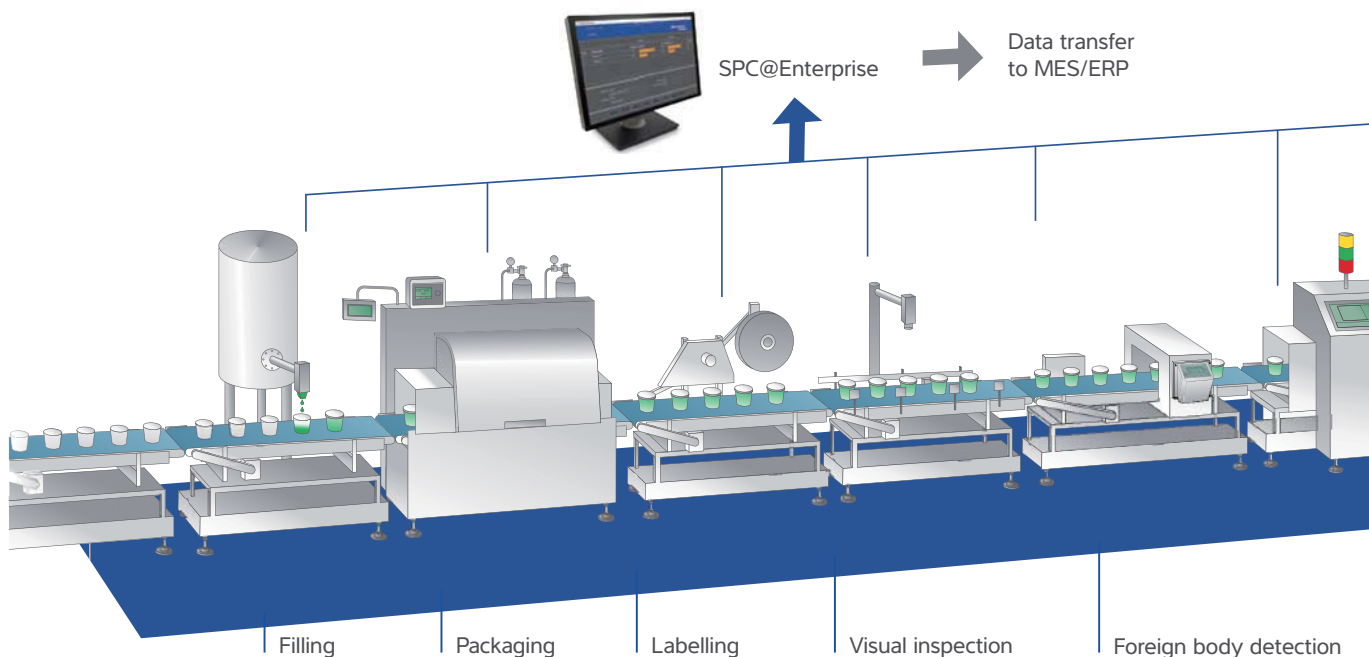
SPC@Enterprise offers a wide variety of benefits for pre-packaging and statistical process control. User benefits include, in particular:

## Pre-packaging checking

- Logging of all kinds of critical process parameters
- Net content monitoring: average weight/minimum filling quantity
- Inspection of solids and liquids (note: density)
- Tare modes: fixed (average) tare, variable tare, destructive tare determination
- Test weighing for setting up batches without official logging
- Definition of standards: tolerances are edited and enhanced to take into account new requirements (legal/product-related)
- Multiple filling head control
- Freely selectable statistics periods and further filter criteria for individual analyses
- Storage of data in various formats (PDF, Excel, Word)



Easy logging of product master data



## Attributive tests

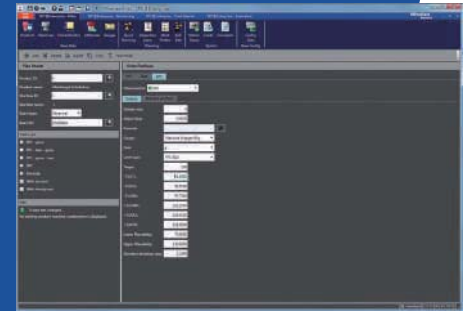
- Packaging and environmental attribute tests for the additional inspection of product properties



Full transparency for ongoing production

## Tests for statistical process control

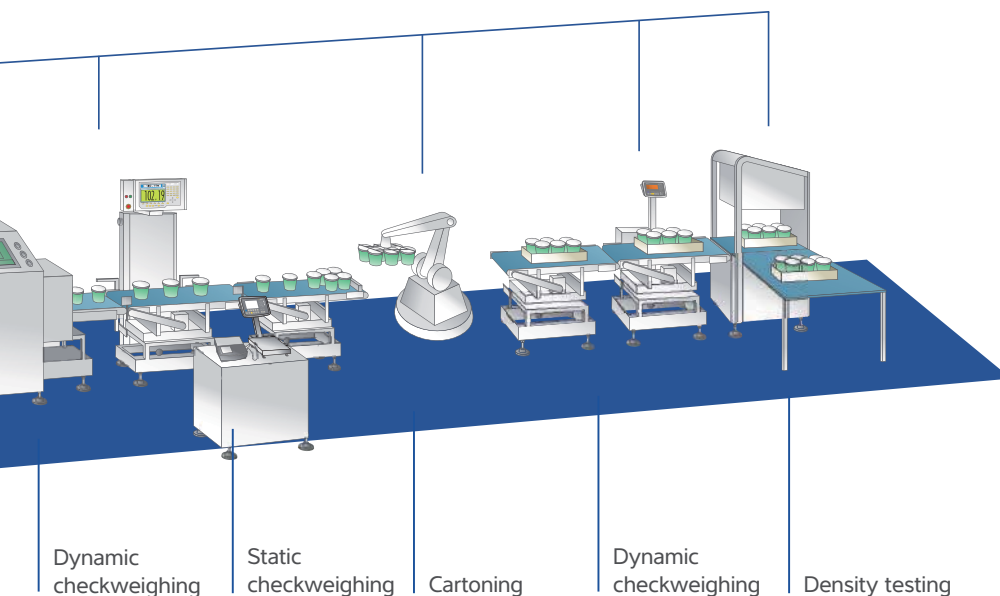
- Data integration via flexible interfaces to HOST systems (MES/ERP systems)
- Statistical process control with freely definable attributes
- Measurement systems with freely definable areas, resolutions and units
- Formula editor for calculating attributes (e.g. component weighing)



Straightforward creation of inspection orders

## Meets the requirements of the pharmaceutical industry

- SPC@Enterprise was developed in line with pharmaceutical industry regulations (FDA, GAMP)
- Complete audit trail covering all software activities
- IQ/OQ services for software qualification available on request
- Validation handbook supports conduct of performance qualification



Dynamic checkweighing

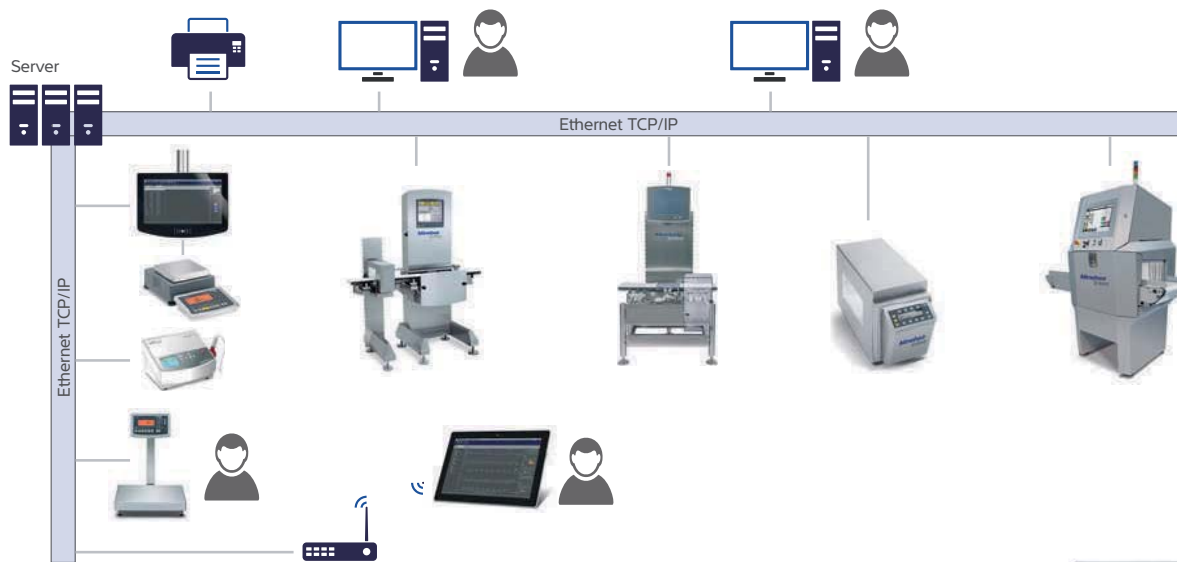
Static checkweighing

Cartoning

Dynamic checkweighing

Density testing

# Measurement systems and interfaces for SPC@Enterprise



All measurement systems can be directly networked via TCP/IP for communication with SPC@Enterprise

## Bench and floor scale Combics® 3

- Reliable, precise weighing and filling head-related logging of samples
- Easy recording of attributive tests
- Transmission of all data and statistics to SPC@Enterprise
- Calculation and update of sample tare values
- Density updated via manual entry
- Dynamic adjustment recommendation and statistical summary after every sample



Bench and floor scale Combics®

SPC@Enterprise is supported by the bench and floor scale Combics® 3 with Ethernet interface and option H6

## Bench scale Signum® with SPC@Enterprise PC data acquisition

In conjunction with PC data acquisition, data can be logged in an intuitive, extremely user-friendly and virtually error-free manner.

- Reliable, high-precision weighing of samples
- Simple, intuitive operation
- PC-based logging of values for assessments subject to calibration regulations as part of pre-packaging checking
- Logging of data using bar code reader and product image display on the PC



Bench scale Signum®

All high-resolution bench scales Signum® support SPC@Enterprise

## Dynamic checkweighers

- Straightforward transmission of product data and test data to the device
- Easy logging and evaluation of sample data in SPC@Enterprise



Scan the QR code and see how filling quantity control is simplified using SPC@Enterprise and a dynamic checkweigher – includes documentation for government authorities.

[www.minebea-intec.com/en/videos/SPCcheckweigher](http://www.minebea-intec.com/en/videos/SPCcheckweigher)



Checkweigher Flexus®

All Minebea Intec checkweighers, metal detectors and X-ray inspection systems are supported by SPC@Enterprise.

## Metal detectors and X-ray inspection systems

Metal detection and X-ray inspection systems are networked directly via TCP/IP for communication with SPC@Enterprise

- Interval logging of foreign body detections
- Documentation of equipment tests with test specimens



X-ray inspection system Dymond



Metal detector Vistus®

## Flex Collector – the innovative universal interface for additional machines and sensors

With SPC@Enterprise 3.0, measurement devices from almost all manufacturers can be seamlessly integrated. The following test modes are possible:

- Filling quantity control (e.g. checkweighers or filling machines)
- Attribute testing (e.g. foreign body detection or documentation of device tests)
- Statistical process control (e.g. moisture meters, residual oxygen measurements)

The FlexCollector supports data acquisition of a wide range of measurement values via TCP/IP.

# Our product portfolio



Acceptance and storage of loose materials

## Incoming goods

Acceptance of piece goods

## Automated production systems

Precise control of delivered and stored materials

For complete process control



Components and solutions for truck scales



Silo weighing solutions



Metal detection systems for loose materials



Floor scales



Dosing solutions

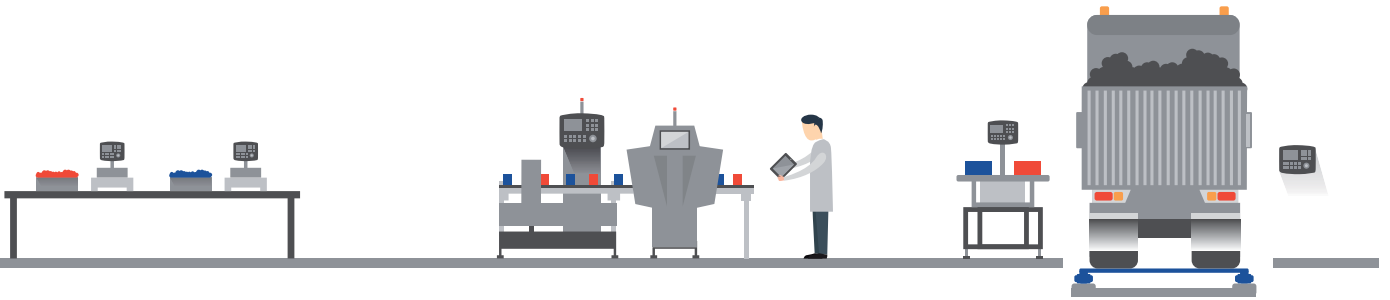


Process container weighing (standard/digital solutions)



Process container weighing (hygienic solutions)

*We supply industry with products, solutions and services that increase the reliability, safety and efficiency of production and packaging lines. Our portfolio covers all applications from incoming goods inspection right through to goods delivery, including automatic and manual processes as well as filling and packing.*



## Manual production

## Packaging

## Outgoing goods

Solutions that ensure accuracy and traceability

Guaranteeing product quality and food safety

Quality assurance of final product



Portioning and checkweighing



Formulation and manual recipe weighing



Metal detection



Checkweighing



X-ray inspection



Filling solutions



Statistical process control



Floor scales



Checkweighers for heavy loads



Components and solutions for truck scales

# Our services

Via our world-wide presence, we and our certified partners stand beside our customers across the globe throughout the entire life cycle of our products and solutions, from assisting them in selecting the right equipment and systems to performing upgrades and refurbishment, as well as conducting user training sessions.

## Engineering Support – ensuring optimal solutions

- Advice on choosing the best products or solutions with regard to the desired performance, precision and costs
- Design-in support when integrating our products and solutions into existing designs
- Customer-specific products or solutions – adapted to individual needs



**engineering support**  
by Minebea Intec



## Commissioning – ensuring that production starts on time

- Mechanical and/or electrical installation, commissioning and instructions on set-up and use
- Calibration or conformity assessment of equipment and systems according to statutory measuring technology requirements
- Equipment qualification (IQ/OQ)



For more detailed information,  
please visit our website or contact  
**info@minebea-intec.com**

## Maintenance and repair – ensuring equipment availability and performance

- Calibration or preparation for verification of equipment and systems according to measuring technology standards and statutory requirements
- Preventative maintenance safeguarding continued availability and performance
- Repair services, including emergency service contracts for a guaranteed response time
- Professional spare parts service
- Remote services



## Upgrades – prolonging equipment life time and boosting performance

- Hardware and software upgrades
- Equipment refurbishment

## Training – enhancing staff capabilities

- User training covering daily operation and/or minor repair and maintenance work
- Seminars providing knowledge of regulations and technologies

**academy**  
by Minebea Intec

